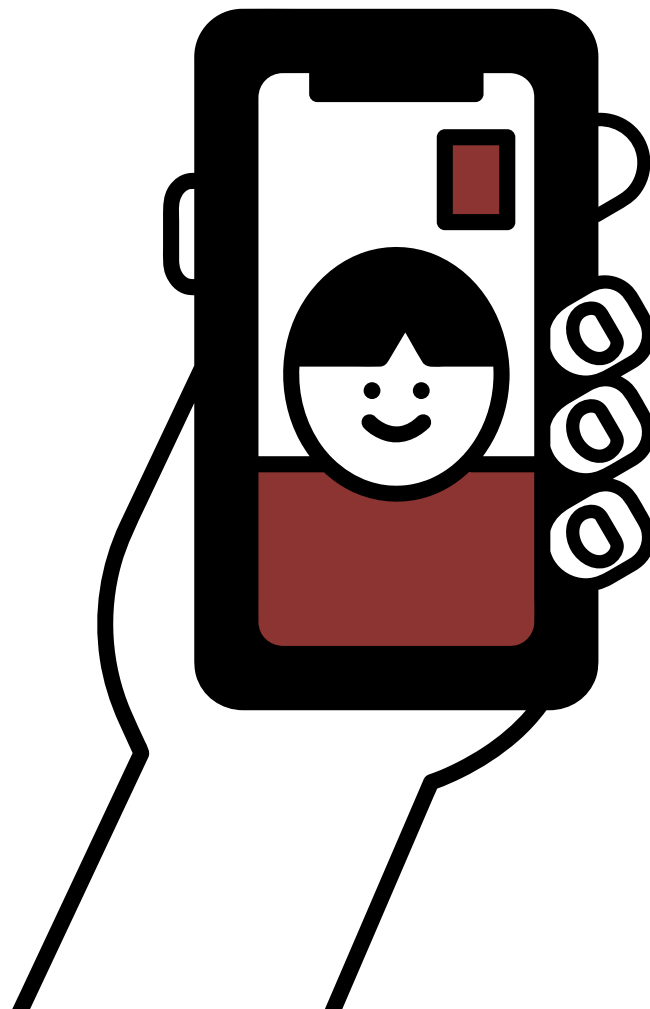


# Supporting the Mental Wellbeing of our people

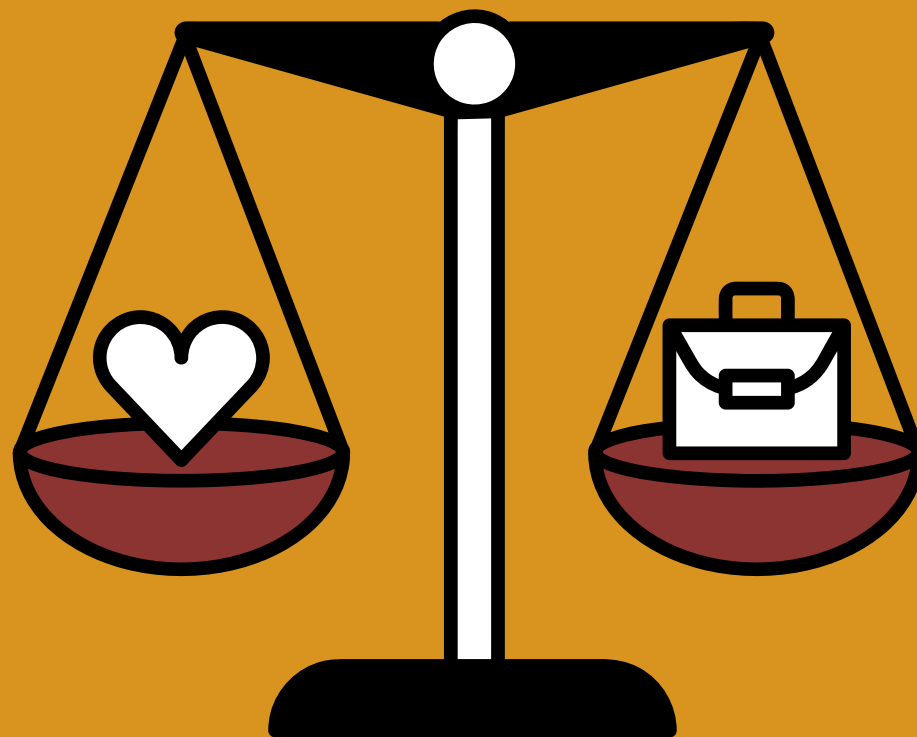
KARATZAS  
& PARTNERS

We offer a **24/7**  
**psychological support**  
**hotline** for our employees  
and their families.

KARATZAS  
& PARTNERS



Our **hybrid work model** enables a balanced work-life approach, allowing **remote work** and **flexible working hours**.



KARATZAS  
& PARTNERS

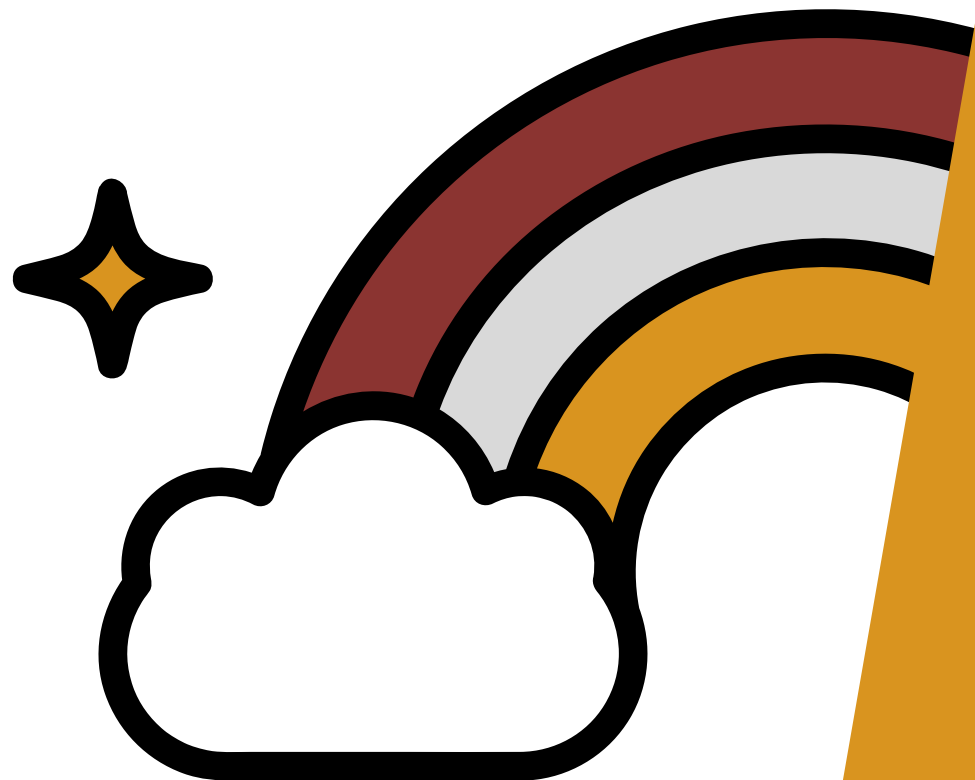
We provide **training & workshops** on leadership, feedback, conflict resolution and more, along with **mentoring & coaching sessions**.



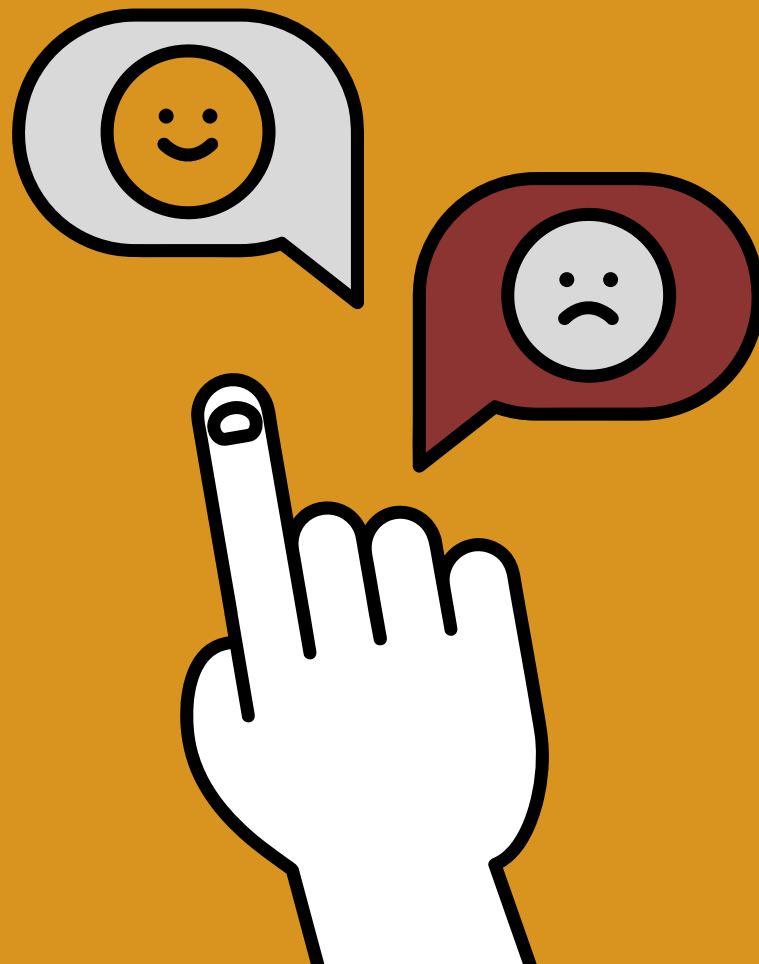
KARATZAS  
& PARTNERS

Our **'buddy initiative'** helps new hires integrate smoothly into the team, offering support and guidance from day one.

KARATZAS  
& PARTNERS



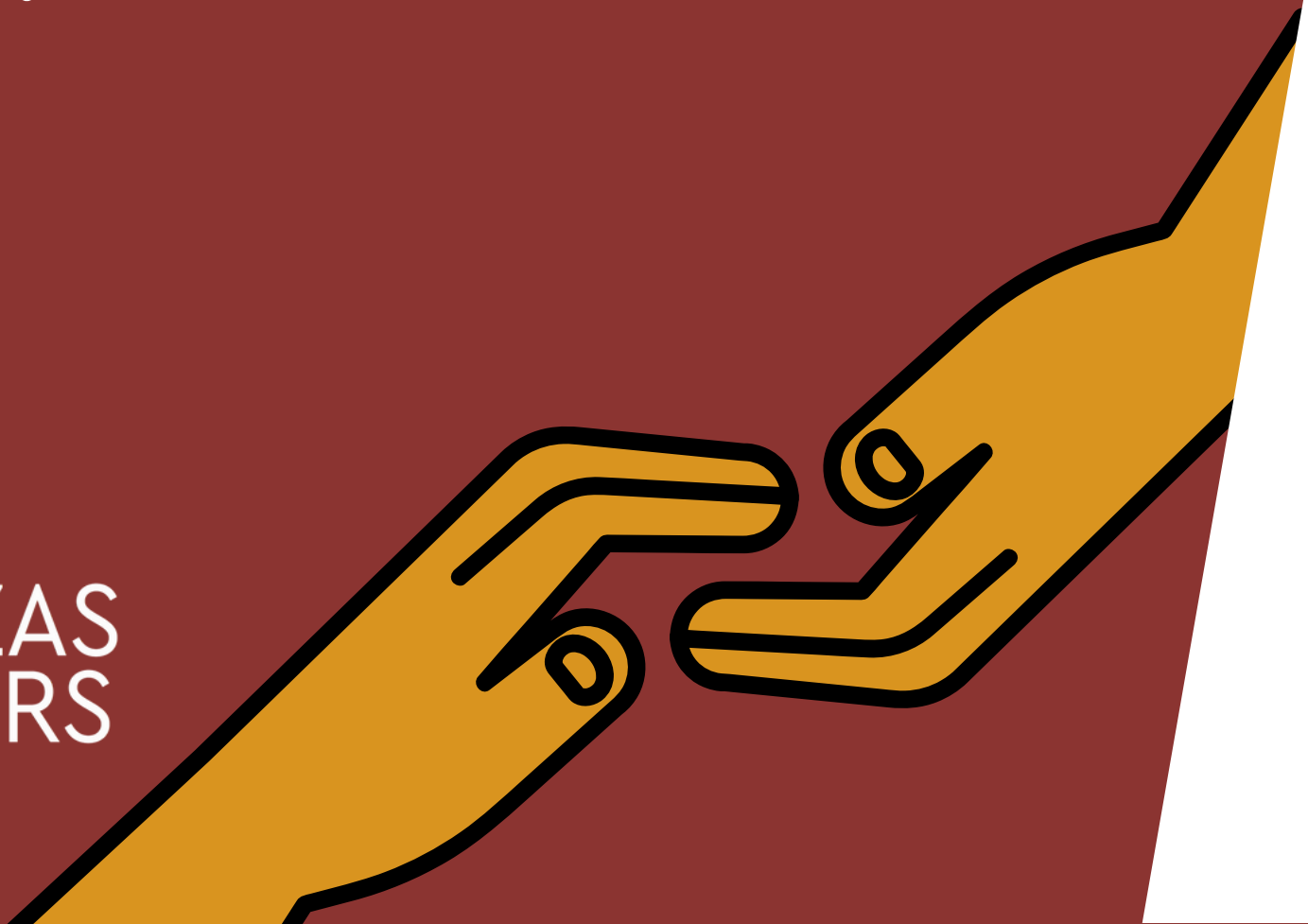
Our **regular 1x1 meetings** give employees the opportunity to discuss both personal and professional matters.




KARATZAS  
& PARTNERS

We offer special arrangements and benefits tailored for **parents** to support their work-life balance.

KARATZAS  
& PARTNERS





**Our corporate events & celebrations** bring the team together, fostering a positive workplace culture.

KARATZAS  
& PARTNERS



KARATZAS  
& PARTNERS

**Setting Precedent**